

LISTEN TO THIS!: Click on  to access the audio version of this guide.

WebMD®

FOCUS ON

WINTER 2024

FIRST PERSON:

TREATMENTS HELP ME
MANAGE MY WET AMD

PAGE 10

VIEWPOINT:

GETTING USED TO
MY NEW NORMAL

PAGE 14

HEALTHY LIVING:

CHANGES COULD SLOW
DISEASE PROGRESSION

PAGE 16

SCAN ME

Access this guide online.
Use your mobile phone
camera to activate the
QR code. **PLUS**, try out
our audio feature.



CONTENTS

 LISTEN TO THIS!

03 NEWS

The latest research

07 BY THE NUMBERS

Stats and facts

08 HEALTH SMARTS

What to expect: Macular degeneration and aging

10 FIRST PERSON

Treatments help me manage my wet AMD

12 CARING FOR YOU

Adjusting to life with this condition

14 VIEWPOINT

Getting used to my new normal



08



14

16 HEALTHY LIVING

Changes could slow disease progression

WebMD Focus On is not responsible for advertising claims. *WebMD Focus On* (ISSN 1553-9946) is published by WebMD LLC and may not be reproduced in whole or in part without written permission of WebMD LLC. All rights reserved. All editorial content is reviewed by our board-certified physicians, is for informational purposes only, and is not intended to be a substitute for professional medical advice, diagnosis, or treatment. WebMD does not endorse any specific product, service, or treatment. Always seek the advice of your health care provider with any questions regarding a medical condition and never disregard professional medical advice or delay seeking it because of something you have read in a WebMD publication. If you think you have a medical emergency, call your doctor or 911 immediately. 2024 WebMD LLC. All rights reserved.

THE LATEST ON

WET AMD

2x Expected increase in U.S. cases of AMD—either wet or dry—by 2050.

SOURCE: BrightFocus Foundation

LITMUS TEST FOR AMD TREATMENT PLAN

Standard treatment for wet AMD involves routine eye injections. But they may not be necessary for everyone. Doctors aren't sure how to tell who needs the treatment and who could hold off. But researchers may have discovered a reliable test. In a small study of eye fluid taken from 38 people with wet AMD, researchers found higher levels of a protein called "angiopoietin-like 4" in people who required monthly injections compared to those who could go longer without injections or even stop them altogether. The protein may serve as a measure of who has stable disease and whose disease is progressing.

SOURCE: JCI Insight

HOW'S YOUR HEART?

Wet AMD, like dry, involves two kinds of deposits in the eyes: drusen and subretinal drusenoid deposits. The type of deposits you have may say something about more than just your eye health. In a study of 126 people with AMD, those with the subretinal deposits were very likely to have a history of heart attack or stroke. Those with drusen were not. The findings suggest that people with subretinal drusenoid deposits who don't already have a history of cardiovascular problems should get checked. They may be at high risk for undetected disease.

SOURCE: *Retina*

9 in 10

Cases of legal blindness caused by wet AMD.

SOURCE: BrightFocus Foundation

FDA-approved to treat Wet AMD



LASTING VISION IMPROVEMENT

that may **extend the time between treatments**
—to up to 4 months

As shown by vision improvement results at 1 year in a clinical study. People received treatment every 2 to 4 months after three initial monthly doses. Your individual results and dosing may vary.



Consider EYLEA HD

In a clinical study at 1 year:



EYLEA HD provided **significant vision improvement**

- Wet AMD patients saw 6 more letters on an eye chart on average



EYLEA HD helped **83% of patients with Wet AMD go 3 or 4 months between treatments** after 3 initial monthly doses*



EYLEA HD may provide **noticeable improvements on your retinal imaging** that you and your doctor can see

EYLEA HD provided similar vision improvements to EYLEA® (aflibercept) Injection with fewer treatments on average at year 1

EYLEA HD was studied in 1009 people with Wet AMD (673 were assigned to EYLEA HD). People assigned to EYLEA HD every 3 or 4 months saw 7 and 6 more letters, respectively, on an eye chart compared to 8 more letters in those on EYLEA every 2 months. Each group had 3 initial monthly doses. These are average results at 1 year among these people. Your individual results may vary.

*Combined results from 2 groups of people who received EYLEA HD in a clinical trial every 3 or 4 months.

To visit
EYLEAHD.com



SCAN HERE

Talk to your retina specialist today to determine if EYLEA HD is right for you.

IMPORTANT SAFETY INFORMATION

EYLEA HD and EYLEA are administered by injection into the eye. You should not use EYLEA HD or EYLEA if you have an infection in or around the eye, eye pain or redness, or known allergies to any of the ingredients in EYLEA HD or EYLEA, including aflibercept.

Injections into the eye with EYLEA HD or EYLEA can result in an infection in the eye and retinal detachment (separation of retina from back of the eye) can occur. Inflammation in the eye has been reported with the use of EYLEA HD and EYLEA.

In some patients, injections with EYLEA HD or EYLEA may cause a temporary increase in eye pressure within 1 hour of the injection. Sustained increases in eye pressure have been reported with repeated injections, and your doctor may monitor this after each injection.

There is a potential but rare risk of serious and sometimes fatal side effects, related to blood clots, leading to heart attack or stroke in patients receiving EYLEA HD or EYLEA.

The most common side effects reported in patients receiving EYLEA HD were cataract, increased redness in the eye, increased pressure in the eye, eye discomfort, pain, or irritation, blurred vision, vitreous (gel-like substance) floaters, vitreous detachment, injury to the outer layer of the eye, and bleeding in the back of the eye.

The most common side effects reported in patients receiving EYLEA were increased redness in the eye, eye pain, cataract, vitreous detachment, vitreous floaters, moving spots in the field of vision, and increased pressure in the eye.

You may experience temporary visual changes after an EYLEA HD or EYLEA injection and associated eye exams; do not drive or use machinery until your vision recovers sufficiently.

Contact your doctor right away if you think you might be experiencing any side effects, including eye pain or redness, light sensitivity, or blurring of vision, after an injection.

For additional safety information, please talk to your doctor and see the full Prescribing Information for EYLEA HD and EYLEA.

You are encouraged to report negative side effects of prescription drugs to the FDA. Visit www.fda.gov/medwatch or call 1-800-FDA-1088.

Please see Brief Summary of full Prescribing Information for EYLEA HD and EYLEA on the next page.

ASK YOUR RETINA SPECIALIST TODAY IF EYLEA HD IS RIGHT FOR YOU

Consumer Brief Summary

EYLEA® HD (aflibercept) Injection 8 mg and EYLEA® (aflibercept) Injection 2 mg

This summary contains risk and safety information for patients about EYLEA HD and EYLEA. It does not include all the information about EYLEA HD and EYLEA and does not take the place of talking to your eye doctor about your medical condition or treatment.

What are EYLEA HD and EYLEA?

EYLEA HD and EYLEA are prescription medicines that work by blocking vascular endothelial growth factor (VEGF). VEGF can cause fluid to leak into the macula (the light-sensitive tissue at the back of the eye responsible for sharp central vision). Blocking VEGF helps reduce fluid from leaking into the macula.

What are EYLEA HD and EYLEA used for?

EYLEA HD is indicated for the treatment of patients with:

- Neovascular (Wet) Age-Related Macular Degeneration (AMD)
- Diabetic Macular Edema (DME)
- Diabetic Retinopathy (DR)

EYLEA is indicated for the treatment of patients with:

- Macular Edema following Retinal Vein Occlusion (RVO)
- Neovascular (Wet) Age-Related Macular Degeneration (AMD)
- Diabetic Macular Edema (DME)
- Diabetic Retinopathy (DR)

How are EYLEA HD and EYLEA given?

EYLEA HD and EYLEA are injections administered by your eye doctor into the eye. Depending on your condition, EYLEA HD and EYLEA injections are given on different schedules. Consult with your eye doctor to confirm which EYLEA HD or EYLEA schedule is appropriate for you.

Who should not use EYLEA HD or EYLEA?

Do not use EYLEA HD or EYLEA if you have an infection in or around the eye, eye pain or redness, or are allergic to aflibercept and/or any other ingredients in EYLEA HD or EYLEA.

What is the most important information I should know about EYLEA HD and EYLEA?

- EYLEA HD and EYLEA must only be administered by a qualified eye doctor. Injections into the eye with EYLEA HD or EYLEA can result in an infection in the eye and retinal detachment (separation of retina from back of the eye) can occur. Inflammation in the eye has been reported with the use of EYLEA HD and EYLEA. If your eye becomes red, sensitive to light, painful, or develops a change in vision, seek immediate care from an eye doctor
- In some patients, injections with EYLEA HD or EYLEA may cause a temporary increase in eye pressure within 1 hour of the injection. Sustained increases in eye pressure have been reported with repeated injections, and your eye doctor may monitor this after each injection
- There is a potential but rare risk of serious and sometimes fatal side effects related to blood clots, leading to heart attack or stroke in patients receiving EYLEA HD or EYLEA
- Serious side effects related to the injection procedure with EYLEA HD or EYLEA are rare but can occur including infection inside the eye and retinal detachment
- You may experience temporary visual changes after an EYLEA HD or EYLEA injection and associated eye exams; do not drive or use machinery until your vision recovers sufficiently

What are possible side effects of EYLEA HD and EYLEA?

EYLEA HD and EYLEA can cause serious side effects.

- **See important safety information listed under “What is the most important information I should know about EYLEA HD and EYLEA?”**

The most common side effects reported in patients receiving EYLEA HD include:

- Cataract
- Increased redness in the eye
- Increased pressure in the eye
- Eye discomfort, pain, or irritation
- Blurred vision
- Vitreous (gel-like substance) floaters
- Vitreous detachment
- Injury to the outer layer of the eye
- Bleeding in the back of the eye

The most common side effects reported in patients receiving EYLEA include:

- Increased redness in the eye
- Eye pain
- Cataract
- Vitreous floaters
- Moving spots in the field of vision
- Increased pressure in the eye
- Vitreous detachment

There are other possible side effects of EYLEA HD and EYLEA. For more information, ask your eye doctor.

It is important that you and/or your caregiver contact your doctor right away if you think you might be experiencing any side effects, including eye pain or redness, light sensitivity, or blurring of vision, after an injection.

You are encouraged to report negative side effects of prescription drugs to the FDA.

Visit www.fda.gov/medwatch or call 1-800-FDA-1088.

What should I tell my eye doctor before receiving EYLEA HD or EYLEA?

- Tell your eye doctor if you have any medical conditions
- Tell your eye doctor if you are pregnant or are planning to become pregnant. It is not known if EYLEA HD or EYLEA may harm your unborn baby
- Tell your eye doctor if you are breastfeeding. It is not known if EYLEA HD or EYLEA may harm your baby. You and your eye doctor should decide whether you should be treated with EYLEA HD or EYLEA, or breastfeed, but you should not do both

How are EYLEA HD and EYLEA supplied?

EYLEA HD is supplied in a clear to slightly opalescent, colorless to pale yellow solution. It is provided in a glass vial containing the amount of product required for a single injection into the eye, which is 0.07 mL of a 114.3 mg/mL solution (or 8 mg of the medicine product).

EYLEA is supplied in a clear, colorless to pale yellow solution. It is provided in a pre-filled glass syringe or vial containing the amount of product required for a single injection into the eye, which is 0.05 mL (or 2 mg of the medicine product).

Where can I learn more about EYLEA HD and EYLEA?

For a more comprehensive review of EYLEA HD and EYLEA safety and risk information, talk to your health care provider and see the full Prescribing Information at EYLEAHD.com and EYLEA.com.

 LISTEN TO THIS!

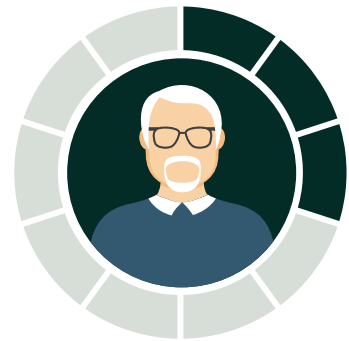
STATS & FACTS

By Sonya Collins

Reviewed by Brunilda Nazario, MD, WebMD Chief Physician Editor, Medical Affairs

21 MILLION

Estimated number of people in the U.S. who have AMD—either wet or dry.



30%

Amount of risk for developing AMD after age 75.

90%

Amount of AMD-related legal blindness cases caused by the “wet” form.



2%

Amount of risk for developing AMD between ages 50 and 59.

SOURCE: BrightFocus Foundation

GETTY IMAGES



🔊 LISTEN TO THIS!

MACULAR DEGENERATION AND AGING

WHAT TO EXPECT

By Rachel Reiff Ellis

Reviewed by Brunilda Nazario, MD,
WebMD Chief Physician Editor, Medical Affairs

Like the name says, age plays a key role in bringing on age-related macular degeneration (AMD). It happens when aging causes damage to your macula—the part of the eye that controls sharp, straight-ahead vision.

The macula is part of your retina, and has some of the most metabolically active cells in your body.

Over time, wear and tear can lead to the symptoms of the disease.

“As the retina is churning out all this energy and turning light into a signal that our brain can use, unfortunately there's going to be breakdown of those components,” says Peter Krall, MD, ophthalmologist at Scripps Clinic in Oceanside, CA.

WHY IT HAPPENS

Macular degeneration is the most common cause of vision loss of people ages 50 and older. Besides age, other factors can raise your risk of it, such as:

- Family history
- Exposure to ultraviolet light
- High-fat diet

WATCH OUT

Pay attention to these symptoms specific to macular degeneration:

- + Blurry, blank, or distorted spots (instead of general blur)
- + Normal peripheral vision, but problems with front focus
- + Missing details of faces or letters in words
- + Straight lines appearing wavy

LUCY LAMBRIEX/VIA GETTY IMAGES

- Smoking
- High blood pressure

“In the aging eye, it’s the combination of increased exposure to stresses and compromised defense systems that is thought to lead to the development of AMD,” says Akrit Sodhi, MD, PhD, associate professor of ophthalmology at the Johns Hopkins Wilmer Eye Institute in Columbia, MD.

WHAT YOU CAN DO ABOUT IT

Over time you may have trouble with daily activities such as driving and reading, and may need certain tools to help you see. But Krall says catching it early is the key to holding off symptoms.

“There are really effective medications that can reduce the fluid buildup in the retina, and really extend the amount of time that you have your vision,” Krall says.

If you’re in the early stages of AMD, your doctor won’t treat it. Instead, you’ll go in regularly for eye exams to keep tabs on your condition.

The main treatment for wet AMD is a medication called anti-VEGF. You get it through injection into your (numbed) eye. VEGF stands for vascular endothelial growth factor, which helps new blood vessels grow. These new blood vessels cause most of the

symptoms of wet AMD. By blocking their growth, you halt the progression of the disease.

Sometimes doctors use a laser treatment called photodynamic therapy (PDT) along with anti-VEGF injections.

Sodhi says these therapies seem to work well for wet AMD and continue to improve.

“With early treatment, most patients with wet AMD maintain good vision,” he says. “Researchers around the world are currently developing new treatments for advanced AMD with the goal of improving upon current treatments for wet AMD and preserving or improving vision in patients with advanced dry AMD.”

LIVING WITH LOW VISION

Peter Krall, MD, offers tips for life with wet AMD.

Get to know your doctor. You’ll be at the doctor’s office quite a bit. But if you stick with it, it really can either improve your vision or keep it from getting worse.

Use vision aids. Magnification is your friend.

Keep a positive outlook. Having AMD doesn’t mean you’ll go blind.

MY JOURNEY WITH WET AMD

 LISTEN TO THIS!

THANKS TO TREATMENTS, I'M LIVING AN ACTIVE LIFE

By Liz Rundzieher

Reviewed by Brunilda Nazario, MD,
WebMD Chief Physician Editor, Medical Affairs

I had dry AMD years ago and was told that it could transition to wet AMD, which is more serious. I was given a grid to post on my refrigerator to monitor my vision. I was told that when the dot got wavy then I should get it checked out. For years there were no issues, but that changed in 2015.

A STORM BREWING

I called the eye center, and their quick response let me know it was serious. They connected me to an

amazing retina specialist. The appointment was very emotional. I started crying when I heard my diagnosis. My husband has issues with his eyes and is dyslexic. I handle all the bills and paperwork, so I worried about how we would manage. I'm a retired schoolteacher, but I stay busy with many activities—spending time with my 10-year-old granddaughter, traveling with my husband (of 46 years) in our RV, and reading. How would this all change? My doctor responded with kindness, sharing that her own grandmother had lost her eyesight, so she felt it was her mission to help others maintain their vision.

CLEAR SKIES AHEAD

On this same visit, my doctor said, “We’re going to give you an injection

CAROLYN HEBBARD/VIA GETTY IMAGES; INSET PHOTO COURTESY OF VICKY FOWLER

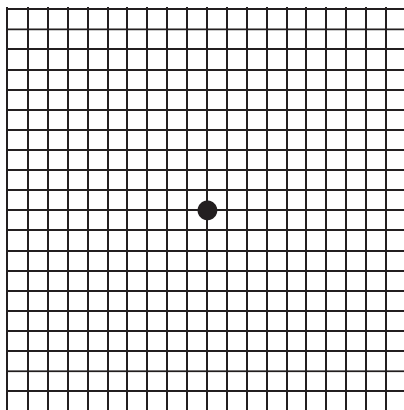
in your eye.” I was terrified. Fluid was building in my eye, so it had to be done. The procedure went well. She was so kind. For 8 years now, she’s always made me feel comfortable—telling me step by step what she is going to do.

We’ve figured out the timing for my injections—going from every 4 weeks to 12, then back to 10 when fluid started to build up again. No matter what, I don’t miss these appointments! I understand how important it is to keep them.

The techniques have improved over the years. I feel fine afterward.

RAIN, THEN RAINBOW

I walk around in complete gratitude. My vision is not perfect, but I’m able to read (a Kindle works best because I can adjust the lighting). I walk my granddaughter to and from school each day and I help her



After speaking with a retina specialist, people may use the Amsler grid (above) to test for vision problems.

with her homework.

I’ve made some lifestyle changes—adding more green veggies to my diet, protecting my eyes from the sun, and trying supplements for eye health.

I still have anxiety at times. But my treatments, which help stop the progression of vision loss, and personal changes have allowed me to continue life in an active way. I am fortunate, though, because I know that once vision is lost, there is no getting it back—it’s permanent.

When I explain my wet AMD to one of my



LIZ’S TIPS

- Find a retina specialist whom you can trust.
- Keep your injection appointments.
- Continue your eye checks at home. Use the grid, look at horizontal lines, and watch for changes.

granddaughters, she says it’s hard to imagine. I explain that as it gets worse, it may be harder to see the center of her face. For now, I still see the beautiful smiles of both of my granddaughters. When things get tough, they are my reminder to hang in there.

 LISTEN TO THIS!

ADJUSTING TO LIFE WITH WET AMD

HOW TO HANDLE THE ROAD AHEAD

By Rachel Reiff Ellis

Reviewed by Brunilda Nazario, MD,
WebMD Chief Physician Editor, Medical Affairs

Although wet AMD is a less common type of macular degeneration, it usually causes quicker vision loss. This means you'll soon start seeing things differently than you did before.

"Yes, you may struggle with reading or not be able to drive, but you will always retain your peripheral vision as long as you have no other eye problems such as glaucoma," says Matt R. Starr, MD, an ophthalmologist at the Mayo Clinic in Rochester, MN, and clinical spokesperson for the American Academy of Ophthalmology.

Here are tips for navigating a new nor-

mal with limited vision and information about what lies ahead.

EYE INJECTIONS: WHAT TO EXPECT

The most common treatments for wet AMD are anti-VEGF injections in the eye. These injections work against a protein called VEGF. VEGF plays a part in the abnormal blood vessel growth in the macula—the part of your eye responsible for sharp vision—causing wet AMD symptoms. A doctor injects these drugs into your eye. Many people new to this treatment are nervous about having a needle to the eye, but it's not painful, says Ninel Gregori, MD, an ophthalmologist at the University of Miami Bascom Palmer Eye Institute in Florida and clinical spokesperson for the American Academy of Ophthalmology.

"The eye is easy to numb, and you will not feel anything sharp," she says.

Your doctor will use a tool to keep your eyelids out of the way, so you don't accidentally blink during the injection. Then they'll numb your eye with drops, gel, or a cotton swab. The

needle is tiny, and some people don't even feel it. You may have soreness after your injection and foggy vision. A wet washcloth and over-the-counter pain medication can help.

MONITOR EYE HEALTH AT HOME

Often only one eye has wet AMD, but the second eye may become affected. Take stock of your vision regularly so you can tell if symptoms are developing.

"If you notice any changes in the second eye, you should see your ophthalmologist right away," Gregori says. To protect the second eye, your ophthalmologist will recommend AREDS vitamins.

"The sooner the treatment starts, the better overall vision prognosis is," she says.

SEE A LOW-VISION THERAPIST

Losing your central vision will mean learn-

ing new ways of doing things. Your doctor can recommend rehabilitation resources who can give you personalized guidance.

"The best advice I give patients is to work with a low-vision specialist who will help them with reading aids, magnifiers, specific lighting, and other new devices or aids which help navigate their homes, write checks, or perform other routine household tasks," Starr says.

A low-vision specialist can also help you recognize and strengthen your other senses. You can learn to tune in more closely to what you hear and touch to help you navigate daily tasks. You'll also practice using your peripheral vision.

KEEP UP WITH CHECKUPS

An important part of preserving vision and preventing complica-

LOW-VISION AIDS

Ninel Gregori, MD, shares some gadgets and workarounds.

- + **Magnifying devices**
- + **Voice commands**
- + **Large-print books**
- + **Audiobooks**
- + **High-contrast household items**
- + **Tactile or textured labels**
- + **Brighter lighting in your home**

tions is regular visits to your eye doctor. Timely treatment can significantly reduce or delay vision loss, Gregori says.

"I encourage patients to be compliant with their eye visits to avoid missing their scheduled eye injections and hopefully to keep vision for many, many years," she says.



MY NEW NORMAL

GETTING USED TO LIFE WITH WET AMD

By Rob Wing

Reviewed by Brunilda Nazario, MD,
WebMD Chief Physician Editor, Medical Affairs

The vision in my left eye was always a little better than the vision in my right. But in April 2020, when I was 59, I suddenly noticed that the vision in my right eye was a

lot worse. I went to my optometrist for an eye exam. He thought I might have a detached retina and referred me to an ophthalmologist. It was the ophthalmologist who diagnosed me with wet macular degeneration. He started me on eye injections that day.

I'd heard of macular degeneration but never "wet" macular degeneration. I learned everything I could about it and about lifestyle changes and technology that might help me.

The vision in my right eye improved after starting the injections. But

grandchildren, my new doctor said it was time to switch me to a new medicine because we weren't getting the most out of the other one. He said, "There's no reason for us not to do the best we can."

He says he's seeing improvement in the fluid in my eyes. If we can just keep it from getting worse, I'll count myself as blessed.

How well I see depends on the light. I have a little dog, and I know he's with me, but sometimes I can't see him. Sometimes I can't make out my own face in the mirror. I just see a person there, but to see any detail, I have to get very close.

Technology helps me. The text on my phone is blown up as large as it will go. I also use speech-to-text. On social media, I can click a button and it will read me anything that I can't see.

Social media has



ROB'S TIPS

- Follow all your doctor's recommendations.
- Learn everything you can about the condition.
- Learn about lifestyle changes.
- Look into assistive technology.
- Don't wait till your next appointment to tell your doctor about any changes.

helped so much. I'm in a Facebook group for macular degeneration. Sometimes just knowing that other people are going through the same thing can make you feel better.

🔊 LISTEN TO THIS!

soon it hit the left eye.

I was a surgical assistant in the operating room. But it got to a point that I had to lean almost completely over the wound, even with bifocals, to do the sutures. It broke my heart, but I had to retire.

When my wife and I moved to Las Vegas to be closer to our son, daughter-in-law, and

HEALTHY HABITS

THESE LIFESTYLE CHANGES COULD SLOW DOWN WET AMD

By Sonya Collins

Reviewed by Melinda Ratini, DO, MS,
WebMD Medical Reviewer

While there's not a cure for wet age-related macular degeneration (AMD), a treatment plan that includes medicine and a healthy lifestyle can slow the progress of the disease.

"There's a genetic component to macular degeneration, but lifestyle can also have an influence on disease progression, which can affect vision and quality of life for our patients," says Purnima S. Patel, MD, an ophthalmologist at Ophthalmology & Retina Associates of

Georgia.

Your healthy habits could help slow down the disease or, if you have wet AMD in only one eye, you may be able to prevent it from developing in the other eye.

STOP SMOKING

If you smoke, make a quit plan with your doctor today. Smoking increases the risk of both developing macular degeneration and of disease progression.

STAY ACTIVE

Regular physical activity could help slow the progress of your wet AMD. "It increases oxygen levels in the eyes and improves some of the cardiovascular risk factors associated with the disease," Patel says.

EAT RIGHT

Harmful substances called oxidants may speed up the progress of AMD. Antioxidants,

found in colorful fruits and vegetables, can blunt this negative effect. "I tell patients to eat the rainbow," Patel says. "Leafy greens and fruits and vegetables of a variety of colors all contain antioxidants."

Omega-3 fatty acids might also slow the progress of advanced, or wet, AMD. You can find omega-3s in fatty fish, like salmon or mackerel. Go for three servings a week.

EAT THE RAINBOW

Antioxidant-rich foods might slow wet AMD progression. Add these to your plate:

- Broccoli
- Avocado
- Chickpeas
- Berries
- Tangerines
- Sweet potatoes